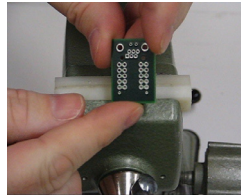


Assembly instructions for the 20-000-011 – 20-000-015 series Kits

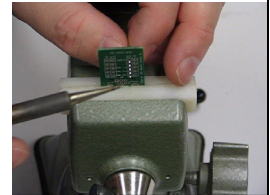
STEP 1

Insert the Molex Header into the solder side of the board. Use the inner rows and leave the outer rows empty. The solder side has no silk screen (white text).



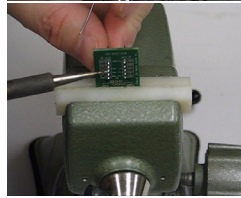
STEP 2

Make sure the Header is flush and straight then solder.



STEP 3

Repeat with the second Molex Header



STEP 4

Make sure you have soldered all the pins on the Molex Headers.



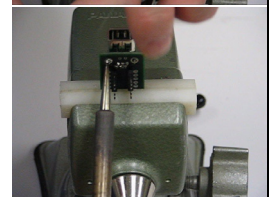
STEP 5

Insert the Jack/Receptacle on the component side. Component side has the silk screen (white text).



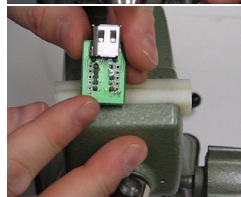
STEP 6

Make sure that the connector is flush to the board and solder one pin while keeping pressure against the connector. Solder all pins and mounting tabs.



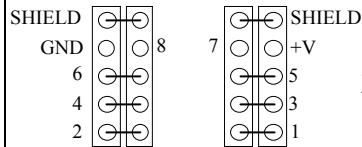
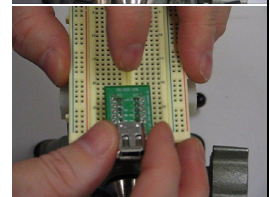
STEP 7

Assembly is complete.

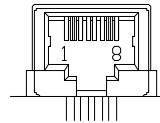


STEP 8

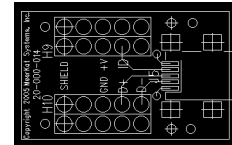
Insert into a solderless bread board as shown.



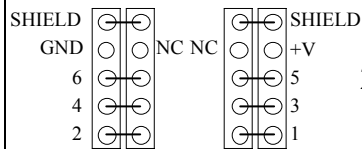
20-000-011



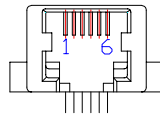
RJ45



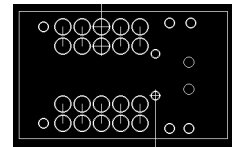
Component Side



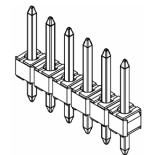
20-000-012



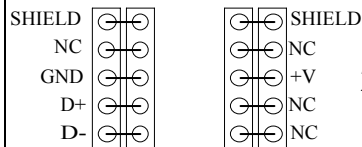
RJ11



Solder Side

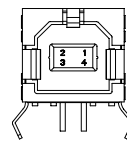


Molex Header



20-000-013

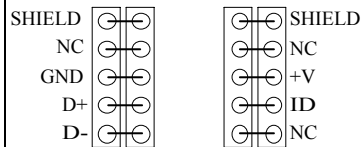
USB TYPE B



1 +V (VBUS)

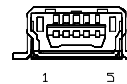
2 D-
3 D+
4 GND

The prototyping environment does not meet the complete specifications for high speed data transfers for USB, Firewire, and Ethernet. Your range and data rate will vary according to the characteristics of your prototyping setup.



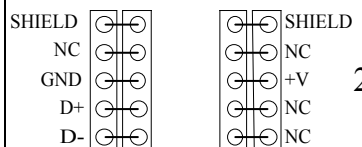
20-000-014

Mini-USB



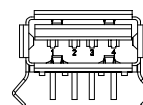
1 +V (VBUS)

2 D-
3 D+
4 ID
5 GND



20-000-015

USB TYPE A



1 +V (VBUS)

2 D-
3 D+
4 GND